

COMMERCIAL DOOR 2500

HEAVY DUTY COMMERCIAL GRADE DOOR

SERIES

DBCI's Commercial Steel Curtain Roll-Up Door Solutions Include:

1900 Series (1950 Insulated)

- 26-gauge Grade E galvanized

2000 Series (2250 Insulated)

- 16-gauge galvanized steel drums with steel ball bearings
- 26-gauge Grade E steel curtain

2500 Series (2750 Insulated)

- Heavy duty
- 10-gauge steel slide bolt lock
- Width up to 18 feet

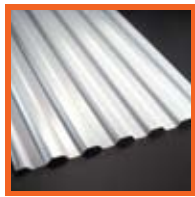
5000 Series (5250 Insulated)

- Aluminum bottom bar with steel angle reinforcement
- Wind certified up to 20' wide

The 2500 Series is DBCI's heavy duty steel curtain roll-up door with tremendous versatility and unmatched quality. The 2500 Series has deep engagement guides creating greater durability and stronger, longer lasting performance. DBCI's commercial-grade steel curtain roll-up doors are designed to meet and/or exceed operational requirements for commercial doors with little or no maintenance.

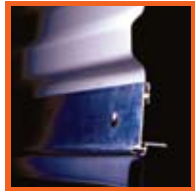


Integrity. Partnership. Quality.



Curtain

- 26-gauge galvanized, Grade E hard steel
- Deep-ribbed corrugation
- Maximum opening size of 18' x 18'
- Flexible wear strips
- **NOTE:** The 2500 Series are wind rated up to 12'0" wide and approximately 90 MPH. The MPH rating increases as the door width decreases. For test results on doors up to 12'0" wide, please contact DBCI Sales at 800.542.0501.



Bottom Bar

- 6063 – T6 aluminum extrusion
- 2" x 1 1/2" galvanized angles
- Bulb astragal
- Stainless steel nuts and bolts

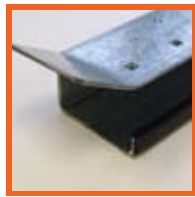


Axle-Drum Assembly

- 1 5/16" O.D. steel axle, 14-gauge
- 11-gauge axle on doors over 10' wide
- Utilizes 12", 16-gauge drums
- Shielded steel ball bearings in drums
- Full top sheet
- Oil tempered torsion springs

A.C.E. Guide System

- 14-gauge galvanized steel
- Adjustable bolt on head stop
- Polyethylene wear strip
- Pre-punched for lock and attachment fasteners



Hardware

- Saddle clamps with set fasteners
- 10-gauge slide locks; 2 per door
- 16-gauge step plate; 2 per door
- 1/4" steel welded angle T-bracket



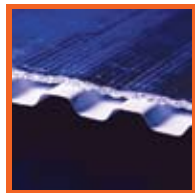
Opening Height Headroom

- Doors up to 10' require 20" of headroom
- Doors 10' to 14' require 22" of headroom
- Doors over 14' require 24" of headroom



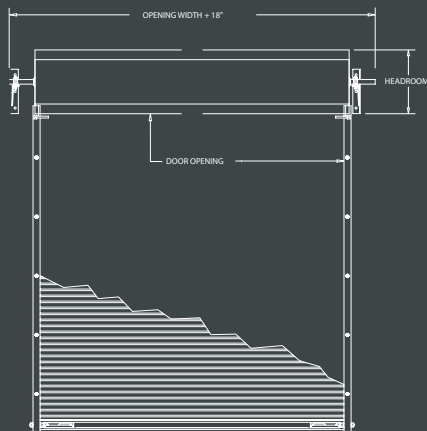
Options

- Chain hoist 4:1 reduction
- Vision panels (17" x 5")
- Top draft stop
- Hood
- Steel mounting plates
- Electric operator
- Low headroom 2400 Series

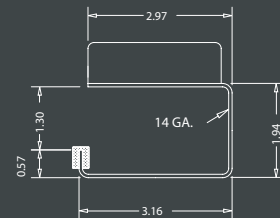


***Also available with insulation (2750 Series)**

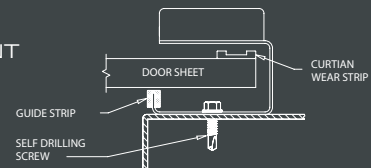
INTERIOR ELEVATION



GUIDE DETAIL

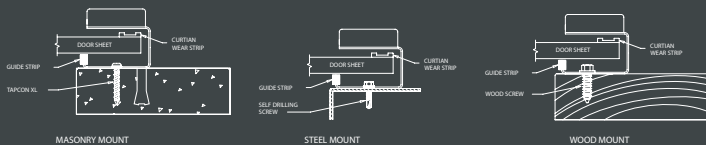


DOOR ENGAGEMENT

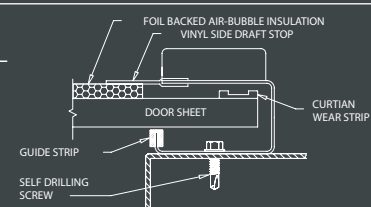


SERIES 2500

GUIDE MOUNTING



INSULATED DOOR DETAIL



SERIES 2750